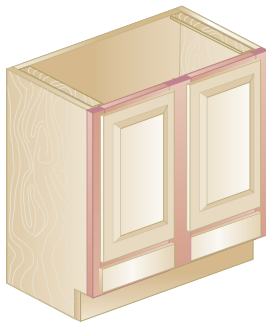


Semi-Custom MODIFICATIONS

We can modify cabinets to meet special needs, add functionality, and help you create a kitchen that is tailor made just for you.

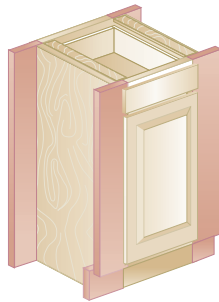
Perhaps you want to increase the depth of a cabinet for more storage or invert the front frame on a sink base cabinet to gain practical drawer space. With the Semi-Custom Program, you can select from a wide list of commonly requested modifications.

PICTURED HERE ARE A FEW OF THE SEMI-CUSTOM MODIFICATIONS



Inverted Frame

Move the drawer to the bottom of the cabinet with an inverted frame.



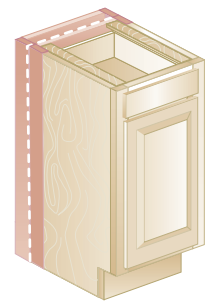
Extended Stiles

Add 3 inches to the stile(s) on any side of a cabinet.



Flush Toe Kick

The cabinet front frame extends to the floor with a flush toe kick.



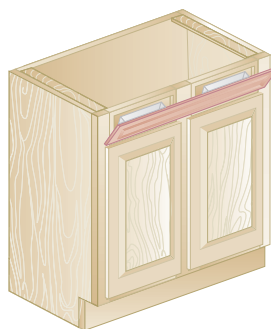
Change Depth*

Reduce or increase the depth of a wall, base, tall or vanity cabinet.



Arch Bottom Rail

The cabinet front frame extends down to the floor and is crafted into a decorative arch valance.



Louver Tray

Create usable storage by replacing false drawers in a sink base with tilt-out louver trays.



1. Inverted frame moves drawer to bottom of cabinet.
2. Extended stiles allow placement of decorative molding.
3. Arch bottom rail offers the look of free-standing furniture.